



Tchoban Foundation
Museum für
Architekturzeichnung

Press Release

Berlin, 7th January 2025

Steven Holl – Drawing as Thought

Tchoban Foundation. Museum for Architectural Drawing
Christinenstrasse 18a, 10119 Berlin, Germany

Exhibition duration: 7th February – 4th May 2025

Opening hours: Mon–Fri 2 pm – 7 pm, Sat–Sun 1 pm – 5 pm

Admission: 6 €; reduced: 4 €

Press tour: 6th February 2025, 4 pm

Exhibition talk: 6th February 2025, 5 pm
Aedes Metropolitan Laboratory
Christinenstr. 18-19, 10119 Berlin
with Steven Holl, Sergei Tchoban and Diana Carta

Exhibition opening: 6th February 2025, 7 pm

The work of internationally renowned US architect Steven Holl is distinguished not only by his extraordinary buildings, with a focus on cultural and public structures such as museums, art centers, concert halls, libraries and universities worldwide, but also by his artistic oeuvre, which today comprises more than 50,000 sketches, black-and-white drawings and watercolors.

Steven Holl's international career took off in 1988 when he won the competition for the Amerika-Gedenkbibliothek in Berlin. The large-format black-and-white drawings of his



Tchoban Foundation
Museum for
Architectural Drawing

winning design are the centerpiece of the exhibition at the Tchoban Foundation's Museum for Architectural Drawing.

Holl's work is grounded in his "three principal missions": art that drives architecture, the necessity of ecological excellence and the significance of space, light, material and detail as experimental phenomena. Among other works, the exhibition includes unrealized projects for the Palazzo del Cinema in Venice (1990) and Porta Vittoria in Milan (1986), as well as drafts for well-known buildings such as Kiasma Museum for Contemporary Art in Helsinki (1993–1998), Chapel of St. Ignatius for the Seattle University (1994–1997), Maggie's Centre in London (2012–2017) and The REACH, Kennedy Center in Washington (2012–2019), culminating with sketches for Holl's lakeside retreat in Rhinebeck, near the Hudson River – Holl's 'ideal place' for drawing.

While exhibition visitors will only encounter a small portion of his extensive body of work, each drawing should be explored and studied individually, in keeping with Holl's intent.

The exhibition, curated by Kristin Feireiss, is accompanied by a catalog.

On the occasion of the exhibition opening, Diana Carta, architect and scholar (Rome), will hold a conversation with Steven Holl and Sergei Tchoban on February 6, 2025 at 5 pm in the Aedes Metropolitan Laboratory.

Steven Holl

Steven Holl was born in 1947 in Bremerton, Washington. He graduated from the University of Washington and pursued architecture studies in Rome in 1970. In 1976, he joined the Architectural Association in London and in 1977 established STEVEN HOLL ARCHITECTS.

Steven Holl has received the 2016 VELUX Daylight Award in Architecture, the 2014 Praemium Imperiale International Arts Award for Architecture, the 2012 AIA Gold Medal,



Tchoban Foundation
Museum for
Architectural Drawing

the 2010 RIBA Jencks Award, and the first ever Arts Award of the BBVA Foundation Frontiers of Knowledge Awards in 2009.

Steven Holl is a tenured Professor at Columbia University's Graduate School of Architecture, Planning and Preservation. He has also taught at the University of Washington, Pratt Institute and the University of Pennsylvania.

Tchoban Foundation. Museum for Architectural Drawing

The Tchoban Foundation Museum of Architectural Drawing was built in 2013 on the site of the former Pfefferberg brewery. The foundation was established in 2009 by the architect Sergei Tchoban with the aim of **promoting the art of architectural drawing**. The Museum of Architectural Drawing shows three exhibitions a year, with works from its own collection and loan exhibitions from international partner institutions, including well-known museums such as the Sir John Soane's Museum in London, the Albertina in Vienna, the École Nationale Supérieure des Beaux-Arts in Paris and the DAM in Frankfurt am Main.

Kindly supported by:



Media partners:



**world-
architects
.com** Profiles
of Selected
Architects

Contact

Tchoban Foundation. Museum for Architectural Drawing
Christinenstrasse 18a, 10119 Berlin

Tel.: +49 30 437 390 90

Fax: +49 30 437 390 92

mail@tchoban-foundation.de

www.tchoban-foundation.de

In case you use this material for publication, we would appreciate a return copy.



Tchoban Foundation
Museum for
Architectural Drawing

Images



1.
Porta Vittoria, Milan, Italy. Garden of Sounds,
perspective and plan, draft version, 1986, ink and
graphite on paper, 75,56 × 56,83 cm © Steven Holl



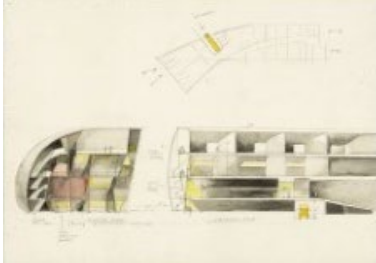
2.
Amerika-Gedenkbibliothek, Berlin, Germany.
Perspective by night, 1988, watercolor, ink, and
graphite on paper, 22,86 × 30,48 cm © Steven
Holl



3.
Void Space / Hinged Space, Fukuoka, Japan.
Perspective, 1989, watercolor and pencil on paper,
12,7 × 17,78 cm © Steven Holl



4.
Palazzo del Cinema, Venice, Italy. Perspective,
1989, graphite and ink on paper, 83,5 × 75,25 cm
© Steven Holl



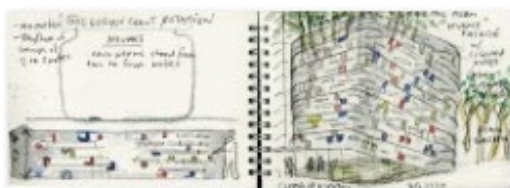
5.
Museum of Contemporary Art Kiasma, Helsinki, Finland. Study, section, 1993, watercolor and pencil on paper, 40,32 × 56,52 cm © Steven Holl



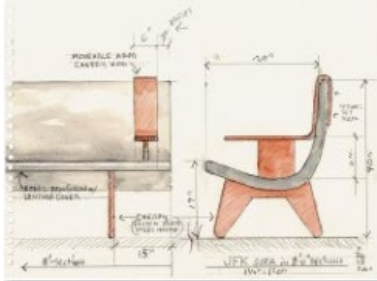
6.
Museum of Contemporary Art Kiasma, Helsinki, Finland. Interior view, 1993, watercolor and pencil on paper, 17,78 × 12,7 cm © Steven Holl



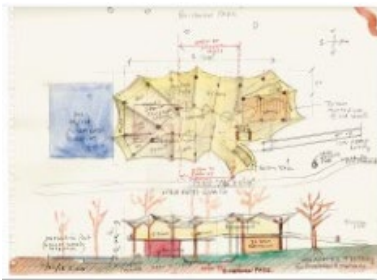
7.
Chapel of St. Ignatius, Seattle University, Seattle, Washington, USA. Exterior perspective 1, night view, 1995, watercolor and pencil on paper, 25,4 × 35,24 cm © Steven Holl



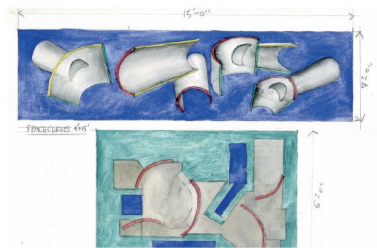
8.
Maggie's Centre Barts, London, United Kingdom. Gregorian chant notation, neumes spread, 2012, watercolor and charcoal on paper, sketchbook, 12,7 × 35,56 cm © Steven Holl



9.
The REACH, Kennedy Center, Washington, D. C.,
USA. Sofa, 2018, watercolor and pencil on paper,
22,86 × 30,48 cm © Steven Holl



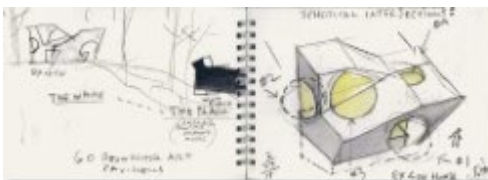
10.
Winter Visual Arts Center, Franklin & Marshall
College, Lancaster, Pennsylvania, USA. Study,
2018, watercolor and pencil on paper,
30,48 × 40,64 cm © Steven Holl



11.
Rubenstein Commons, Institute for Advanced
Studies, Princeton, New Jersey, USA. Carpet study,
space curves, 2016, watercolor and pencil on
paper, 31,12 × 45,72 cm © Steven Holl



12.
Rhinebeck Campus, Round Lake Hut, Rhinebeck,
New York, USA, 2001, watercolor and charcoal on
paper, sketchbook, 13,65 × 20,95 cm © Steven
Holl



13.
Rhinebeck Campus. Ex of In House, Rhinebeck,
New York, USA. The White, The Black (left page),
Spherical Intersections (right page), 2015,
watercolor and charcoal on paper, sketchbook,
12,7 × 35,56 cm © Steven Holl



Tchoban Foundation
Museum for
Architectural Drawing



14.
Rhinebeck Campus, Archive & Library, Rhinebeck,
New York, USA. Brachiata, 2018, watercolor and
charcoal on paper, 12,7 × 20,32 cm © Steven Holl



15.
Ostrava Concert Hall, Czech Republic, 2018,
watercolor and pencil on paper, 12,7 × 17,78 cm
© Steven Holl



16.
Student Performing Arts Center, University of
Pennsylvania, Philadelphia, USA. Scheme F
Façade, 2021, watercolor and pencil on paper,
20,32 × 20,32 cm © Steven Holl